

# You DREAM it

**LG&E CO.  
CREDIT UNION**

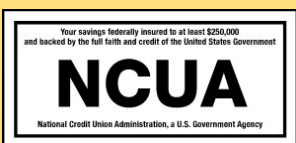
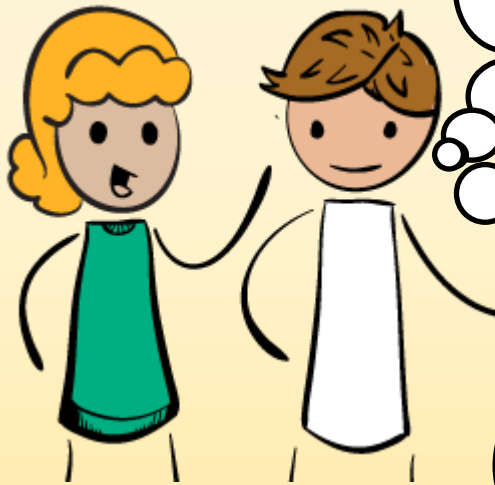
# we can FUND it!

**Secured Loan**  
Auto, Boat, RV,  
Tractors and more

**VISA**  
No annual fee  
Rates as low as 6.90%  
APR\*  
Earn rewards

**Real Estate**  
Mortgages  
Home Equities  
HE - Lines of Credit

**Summer loan  
or  
Signature loan**



Loans subject to credit approval. Rates may vary. Must be a credit union member to apply. Federally insured by the NCUA, Equal housing lender.

\* APR annual percentage rate

